

## VAS 6558A high-voltage measuring module

Unpacking instructions

V1.08 01/21

Start-up

Brief instructions

**Please read carefully!**



# Contents

<b>SAFETY INSTRUCTIONS</b> .....	<b>I</b>
<b>IMPORTANT SAFETY INSTRUCTIONS</b> .....	<b>III</b>
<b>IMPORTANT NOTICES</b> .....	<b>X</b>
<b>1 IMPORTANT INFORMATION</b> .....	<b>1-1</b>
<b>2 SCOPE OF DELIVERY</b> .....	<b>2-1</b>
2.1 System delivery.....	2-1
2.2 Deliverable accessories .....	2-2
<b>3 UNPACKING INSTRUCTIONS</b> .....	<b>3-1</b>
<b>4 STARTUP</b> .....	<b>4-1</b>
4.1 Using the VAS 6558A with ODIS Service .....	4-1
4.2 Using the VAS6558A together with the VAS-PC V19.xx.....	4-2
4.2.1 Installation of VAS 6558A .....	4-2
4.2.2 Uninstallation (only if necessary) .....	4-4
4.3 Access to the user documentation .....	4-5
<b>5 ASSEMBLY</b> .....	<b>5-1</b>
5.1 VAS 6558A with VAS 6556/VAS 6556A workshop trolley.....	5-1
5.2 Connection to the tester/spec. laptop.....	5-2
<b>6 POWER SUPPLY</b> .....	<b>6-1</b>
6.1 Switching off .....	6-1
<b>7 BRIEF INSTRUCTIONS</b> .....	<b>7-1</b>
7.1 Installation of VAS 6558A .....	7-1
7.2 Adaptation of the cable .....	7-1
7.3 Starting the VASPC software.....	7-2
7.4 Starting the ODIS Service application .....	7-2
<b>8 FAULTS</b> .....	<b>8-1</b>
8.1 Regional service centers.....	8-1

## Appendices

- VAS 6558A proof of delivery
- Registration certificate for VAS 6558A

Products are subject to alterations in form, equipment and design. No claims may be made on the basis of the information, graphics and descriptions contained in these instructions. Reprints, copies and translations of this document, in whole or in part, may not be undertaken by third parties without the express written permission of Volkswagen AG and/or the manufacturer. All rights provided under copyright law are expressly reserved by Volkswagen AG and the manufacturer. Subject to alteration. All rights reserved.

VOLKSWAGEN AG	Issued by: AVL DiTEST GmbH
KD-Werkstattausrustung	Alte Poststrasse 156
D-38436 Wolfsburg	A-8020 Graz
Volkswagen type no. 405 360 01 000	AVL DiTEST ID-No. AT7703GB Rev. 08

# Safety instructions

## Explanation of symbols

Symbols with the following meanings are used in the safety instructions of the operating manuals, unpacking, start-up and brief instructions or other documentation provided, in screen displays on the tester during operation and on the products themselves:



**DANGER**

Texts with this symbol contain information relating to your safety and how you can reduce the risk of serious or fatal injuries.

---

The **risk** symbol requires highest attention for your safety.



**WARNING**

Texts with this symbol contain information relating to your safety and how you can reduce the risk of serious injuries.

---

The **WARNING** symbol requires particular attention for your safety.



## CAUTION

Texts with this symbol contain information on how you can avoid damage to the vehicle and the device.

---

The **Caution** symbol informs you that if the information is ignored, damage to the vehicle, tester, specified laptop or VAS 6558A could result.

---

## NOTICE

Text with this symbol contains additional, useful information.

---

A **Note** symbol contains other, special instructions for using the device, and related information.

---

## NOTICE

### Note on further safety instructions

The general safety instructions, which are valid for the VAS 6558A, are listed in the following. Further safety instructions are to be found in the operating manuals. Therefore, please read the operating manuals before use.

Safety instructions may also appear on the screen of the tester. Follow all the instructions displayed.

---

# **IMPORTANT SAFETY INSTRUCTIONS**

## **READ ALL INSTRUCTIONS - SAVE THESE INSTRUCTIONS!**



### **WARNING**

Use only as described in this manual.

---



### **WARNING**

Only use the VAS 6558A according to the description, otherwise the protection provided will be impaired. Use only manufacturer's recommended attachments.

---



### **DANGER**

If the test leads with the test adapters, the USB cable or the VAS 6558A is damaged, it must not be used until a qualified person has tested and repaired it.

---



### **DANGER**

The VAS 6558A is not suitable for measurements on the power grid!  
The VAS 6558A is only suitable for measuring DC voltages!  
Any outlets installed in the vehicle must not be measured!  
Measurements with the VAS 6558A on electric vehicles may only be carried out if no charging cable is connected to the vehicle!

---



**DANGER**

At the high-voltage battery is life-threatening high voltage. Make sure that no one comes into contact with the connections of the high-voltage battery, the connection cables of the high-voltage battery and other high-voltage parts.

---



**DANGER**

**Do not touch the ends of test adapters and probe tips during high voltage insulation measurement.**

If the ends of test adapters/probe tips are disconnected or are connected to an ohmic test object for measurement, then a current of up to 1 mA with a voltage of 250 ... 1000 V would flow through your body if touched. The electrical shock is noticeable, however the electrical current does not reach fatal levels.

After high voltage insulation measurement, high voltage decreases on the probe tips. It is displayed on the VAS 5051B, VAS 5052A and VAS 6150 (specified laptop) as soon as the high voltage is decreased. Make sure that nobody comes in contact with the test adapters/probe tips as long as high voltage is applied!

---



**DANGER**

**Only carry out the measurement of DC voltage-free with the hybrid voltage measuring adapter VAS 6558 / 1-1 \***

**For other measurements use the hybrid measurement adapter for leakage resistance measurement, VAS 6558A/1-2\* or the hybrid measurement adapter for air conditioning compressor,**

**VAS 6558A/1-3\*. In any case observe the user guidance of the software!**

---

\*) Only for use with VW Tuareg, Audi Q5, Porsche Cayenne and Porsche Panamera!

---



**WARNING**

The test object must be de-energised during high voltage insulation measurement.

Therefore, carry out a DC voltage measurement before each high-voltage insulation measurement! Make sure that the DUT is de-energized during high-voltage insulation measurement!

---



**DANGER**

Opening the VAS 6558A without permission, or making unauthorised modifications, can expose both yourself and the device to serious danger.

---



**WARNING**

Danger of tripping

Do not let cord hang over edge of table, bench or counter, or come in contact with hot manifolds or moving fan blades. Pay attention to possible tripping hazards during the measuring process.

---



**WARNING**

An extension cord is not allowed. For testing use only specified cables.

---



**WARNING**

To reduce the risk of fire, do not operate equipment in the vicinity of open containers of flammable liquids (gasoline).

---



**WARNING**

Adequate ventilation should be provided when working on operating internal combustion engines.

---



**WARNING**

Risk of explosions

The VAS 6558A has internal parts which emit sparks and therefore must not be exposed to flammable fumes. The VAS 6558A should be operated at least 460 mm (18 inches) above the floor surface since fumes from fuels and other materials accumulate at floor level.

---



**WARNING**

Care must be taken as burns can occur from touching hot parts.

---



**WARNING**

Let equipment cool completely before putting away. Loop cord loosely around equipment when storing.

---





**WARNING**

Keep hair, loose clothing, fingers, and all parts of body away from moving parts.

---



**WARNING**

To reduce the risk of electric shock, do not use on wet surfaces or expose to rain.

---



**WARNING**

ALWAYS WEAR SAFETY GLASSES. Everyday eyeglasses only have impact resistant lenses, they are not safety glasses.

---



**CAUTION**

The VAS 6558A may only be used within the measurement ranges stipulated in the technical data and descriptions in the operating manual. Do not perform measurements on damaged leads.

---



**WARNING**

Electrical ignition systems have voltages up to approx. 30 kV. Observe general safety guidelines for workshops at all times.

---



**WARNING**

Fire hazard due to overheating  
Protect the VAS 6558A from direct sunlight and heat.  
Do not place the VAS 6558A on any heat sources.  
Place the VAS 6558A on a non-flammable, heat-resistant and non-conductive surface during the measurement process.

---



**CAUTION**

***Caution when connecting non-VW vehicles!***

The VAS 6558 has been developed for vehicles from the Volkswagen group. Connecting the VAS 6558A directly to vehicles from other manufacturers can therefore result in damage to the vehicle and / or the VAS 6558A.

---



**CAUTION**

***Caution when cleaning the VAS 6558A***

Before cleaning the VAS 6558A, pull out the USB cable and measuring cables!

Clean the VAS 6558A **only** with a dry cloth.

Do **not** use cleaners or solvents.

---

**READ ALL INSTRUCTIONS - SAVE THESE INSTRUCTIONS!**

## IMPORTANT NOTICES



### CAUTION

Please note the indications of the connected controller/PC/notebook/tester regarding contamination!

---



### CAUTION

If the VAS 6558A is used in a way we did not specify, the protection provided by the VAS 6558A may be impaired!

---

## **IMPORTANT SAFETY INSTRUCTIONS**

1. Read all instructions.
2. Care must be taken as burns can occur from touching hot parts.
3. Do not operate equipment with a damaged cord or if the equipment has been dropped or damaged – until it has been examined by a qualified service person.
4. Do not let a cord hang over the edge of the table, bench, or counter or come in contact with hot manifolds or moving fan blades.
5. If an extension cord is necessary, a cord with a current rating equal to or more than that of the equipment should be used. Cords rated for less current than the equipment may overheat. Care should be taken to arrange the cord so that it will not be tripped over or pulled.
6. Always unplug equipment from electrical outlet when not in use. Never use the cord to pull the plug from the outlet. Grasp plug and pull to disconnect.

7. Let equipment cool completely before putting away. Loop cord loosely around equipment when storing.
8. To reduce the risk of fire, do not operate equipment in the vicinity of open containers of flammable liquids (gasoline).
9. Adequate ventilation should be provided when working on operating internal combustion engines.
10. Keep hair, loose clothing, fingers, and all parts of body away from moving parts.
11. To reduce the risk of electrical shock, do not use on wet surfaces or expose to rain.
12. Use only as described in this manual. Use only manufacturer's recommended attachments.
13. **ALWAYS WEAR SAFETY GLASSES.** Everyday eyeglasses only have impact resistant lenses, they are not safety glasses.

## **SAVE THESE INSTRUCTIONS**

# 1 Important information

Dear customer,  
please note the following points in case of transport damage/incomplete delivery.

## **Goods / packaging damaged on the outside (without / with repackaging):**

- Please describe the damage (condition of the goods / packaging)
- enclose photos if possible (before and after the unloading)
- Please mention the defect on the freight document, along with a signature of the driver
- Contact **Volkswagen dept. K-VO-W** immediately.

## **Goods / packaging in order on the outside / defects ascertained subsequently /missing parts:**

- Describe the damage
- Enclose photos if possible
- Check the delivery, see /1/, unpacking, startup and brief instructions, chapter 2 "*Scope of delivery*"
- Contact **AVL DiTEST Fax +49 (0) 9103-7131-112** immediately. Enclose the form "System delivery/proof of delivery", see /1/, unpacking, start-up and brief instructions, *Enclosure*. For that, fill out the white fields.

## **Exception - USA and Canada:**

- Please report directly to Equipment Solutions, Volkswagen of America:  
Fax.: 800-892-9651.

## **Exception - Japan:**

- Please report directly to your sales centre, VGJ Japan:  
Fax.: 03-3570-3066.

### **Warranty and registration**

The warranty is 24 months from the first delivery (except for wearing parts) and is only valid if registration is carried out.

To register, please return the completed registration certificate by fax directly to the AVL DiTEST- Service Centre in Germany.

A form for the registration certificate is given in /1/, Unpacking Instructions, Start-up, Brief instructions, Enclosure.

Please also retain your delivery receipt as proof of purchase.

The address, telephone and fax number of the relevant service centre is given in /4/, service information, chapter 3.1 *Regional service centres*.

**AVL DiTEST Germany Fax: +49 / 9103 / 7131 / 277 International  
(Registration to this address only) 09103 / 7131 / 277 Germany**

Thank you for your cooperation,  
Your AVL DiTEST Service Center

### **Temperature compensation**

When delivering the VAS 6558A in the winter, the inside of the device must be prevented from becoming moist. For this reason, we request that you allow the device to stand for approx. 3 hours at the location from which it is to be operated before connecting it or switching it on!


### **Safety and start-up instructions**

Before starting up the device, please read the safety and start-up instructions carefully.



## 2 Scope of delivery

### 2.1 System delivery

no.	VAS no.	Component	Article no.	
			AVL DiTEST	VW
1.	6558A	VAS 6558A High-voltage measuring module (complete) comprising:	VS8869	ASE 405 350 01 000
2.	6558A/2	VSAS 6558A High-voltage measuring module basic device	BO7777	ASE 405 355 01 000
3.	6558A/3	Storage case	MK7487	ASE 405 356 01 000
4.	6558A/4	Red probe tip**	EU7998	ASE 405 357 00 000
5.	6558A/5	Black probe tip**	EU7999	ASE 405 358 00 000
6.	6558A/6	Multilingual CD/DVD with: a) Software: • VAS6558A software (driver) b) Documents: • Hardware operating manual • Service information • Registration certificate • Unpacking, startup and brief instructions	BO7780	ASE 405 359 01 000
7.	6558A/7	Unpacking, startup and brief instructions (hard copy) Registration certificate (hard copy)	AT7703GB AT7241GB	ASE 405 360 01 000
8.	6558A/24	Red probe tip***	EU7307	ASE 405 391 00 000
9.	6558A/25	Black probe tip***	EU7291	ASE 405 392 00 000
10.	6558A/--	0 ohm clip 	BO7793	ASE --- --- ---

## 2.2 Deliverable accessories

11.	5055/4	<b>„Fischer-to-USB“ Adaptor</b> The Adaptor VAS 5055/4 is needed for diagnostic tester which have no „Fischer“-socket as an USB-Port. (i.e.: VAS 5051B, VAS 5052A, VAS 6150, VAS 6150A)		ASE 405 258 00 000
12.	5055/2	USB adapter with cable relief		ASE 405 257 00 000
13.	6558A/4	Red probe tip	EU7998	ASE 405 357 00 000
14.	6558A/5	Black probe tip	EU7999	ASE 405 358 00 000
15.	6558/1	The hybrid measuring adapter set contains* 16 ... 18		ASE 405 351 00 000
16.	6558/1-1	Hybrid measurement adapter for voltage measurement*		ASE 405 352 00 000
17.	6558/1-2	Hybrid measurement adapter for leakage resistance measurement*		ASE 405 353 00 000
18.	6558/1-3	Hybrid measurement adapter for air conditioning compressor*		ASE 405 354 00 000
19.	6558/9	Set HV-Testadapter** containing pos. 20 ... 22		ASE 405 362 00 000
20.	6558/9-1	Hybrid-Testadapter single IPT**		ASE 405 363 00 000
21.	6558/9-2	Hybrid-Testadapter 2-pole IPT **		ASE 405 364 00 000
22.	6558/9-3	Hybrid- Testadapter 3-pole IPT **		ASE 405 365 00 000
23.	6558/9-4	Hybrid- Testadapter for climate compressor**		ASE 405 366 00 000
24.	6558A/27	Set of Kelvin terminals / measuring tips (red & black) for precise equipotential bonding without zero adjustment via 4-wire measuring method	BO8026	ASE 405 394 00 000
25.	6558A/27-1	Kelvin clamp red and black	EU8021	ASE 405 371 00 000
26.	6558A/27-2	Kelvin measuring tip red and black	EU8022	ASE 405 372 00 000
27.	6558A/--	0 ohm clip	BV7793	ASE --- --- --- ---
28.	6558A/24	Red probe tip***	EU7307	ASE 405 391 00 000
29.	6558A/25	Black probe tip***	EU7291	ASE 405 392 00 000

\*) Only for use with VW Tuareg, Audi Q5, Porsche Cayenne und Porsche Panamera!

\*\*) Used for VW Jetta Hybrid!

\*\*\*) Used for VW Touareg Hybrid, Audi Q7 Hybrid!

### 3 Unpacking instructions



Fig. 3-1 Packaging VAS 6558A Scope of delivery

Unpack the VAS 6558A and check the contents as described in chapter 2, “System delivery”.

## **4 Startup**

### **4.1 Using the VAS 6558A with ODIS Service**

If you want to use the VAS 6558A with ODIS Service, please install the ODIS System first.

Please connect the VAS6558A to your computer before starting ODIS for the first time.

## 4.2 Using the VAS6558A High Voltage Measurement Modul together with the VAS-PC V19.xx

### 4.2.1 Installation of VAS 6558A



#### CAUTION

Install the VAS 6558A software **before** you connect the VAS 6558A to the tester/specified laptop!

Log on with a user account which has administration rights.

1. Insert the CD/DVD in the DVD drive of the VAS 5051B/VAS 5052A or VAS 6150 / VAS 6160 (spec. laptop).
2. Run **“Setup.exe”** from the CD/DVD provided (double-click on Setup.exe).
3. Click **“Install”**.

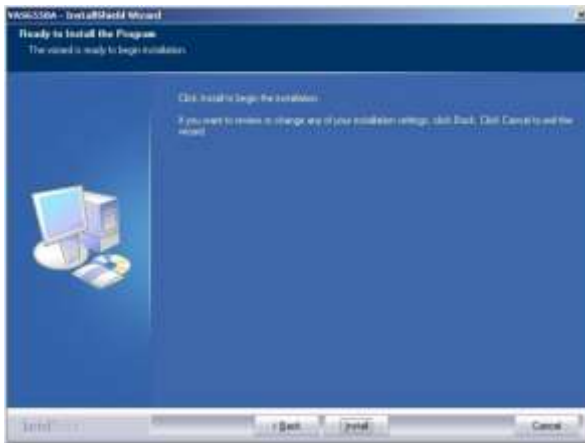


Fig. 4-1 start the installation

- The VAS 6558A software is installed. This can take a few minutes.



Fig. 4-2 Installation in progress

- Click **“Finish”**.



Fig. 4-3 Installation finished

## 4.2.2 Uninstallation (only if necessary)

1. Click **“Start”**, **“Settings”** and **“Control Panel”**.
2. Double-click on **“Software”**.
3. Click **“VAS6558A”** and **“Remove”**.

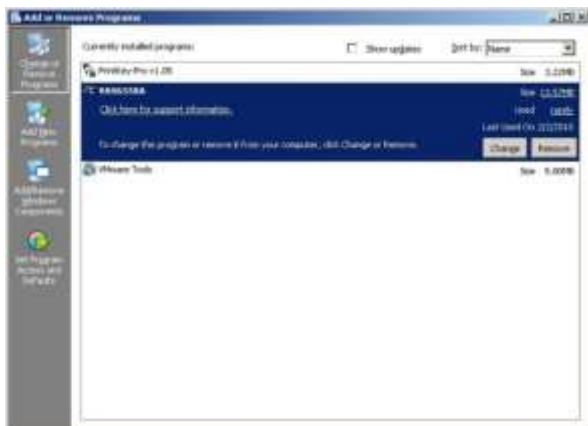


Fig. 4-4 Uninstallation, software

4. Confirm the query by clicking **“Yes”**.



Fig. 4-5 Uninstallation, query

5. After uninstallation, close the window by clicking the cross (top right).

---

## 4.3 Access to the user documentation

---

### NOTICE

The operating manuals are kept up-to-date and are supplied with each CD/DVD. Check the manuals for new information after every update.

---

#### Viewing and printing an operating manual on the tester

- a) Without CD/DVD** (the manuals are copied during installation on the tester)
- Click **“Start”**, **“Programs”**, **“DiTEST”**, **“VAS6558A”** and **“VAS6558A - Documents”**.
  - Click on your language and then on the desired manual.
- b) With the CD/DVD**
- Insert the CD/DVD in the drive.
  - Start Windows Explorer
  - Click on the drive icon and “documents” folder
  - Double-click the desired document

The Acrobat Reader starts and displays the selected manual.

#### VAS 6558A Service information

Information on service centres, the fault report fax and service terms; see /4/, service information, chapter 2 “*Relevant service centres*”.



## 5 Assembly



### CAUTION

Install the VAS 6558A software as described in chapter 4.1 “*Installation VAS 6558A*”, **before** you connect the VAS 6558A to the tester/specified laptop!

### 5.1 VAS 6558A with VAS 6556 workshop trolley / VAS 6556A

1. Hang the VAS 6558A on the cable hooks (a) and run the USB cable in front of the backplate (b) in the equipment trolley.

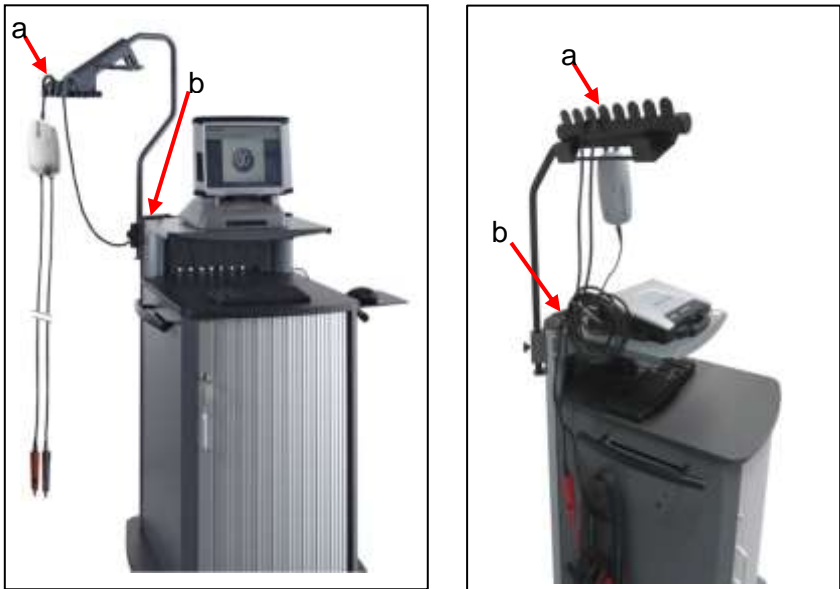


Fig. 5-1 VAS 6558A on the cable hooks

VAS 6558A unpacking instructions, start-up, brief instructions V1.08 01/21 All rights reserved.

405 360 01 000

5-1

## 5.2 Connection to the tester/spec. laptop

### **Connecting the VAS 6558A to VAS 5052A with docking station:**

1. Please open the Flap of the docking station (a) and connect the „Fischer-to-USB” Adaptor (b) to an unused USB socket. Please make sure that the USB-Connector fits correctly. Connect the VAS6558A (c) to the “Fischer-to-USB”-Connector (b). Please note: The “Fischer-to-USB”-Connector is an accessory from Volkswagen with part no.: ASE 405 258 00 000.

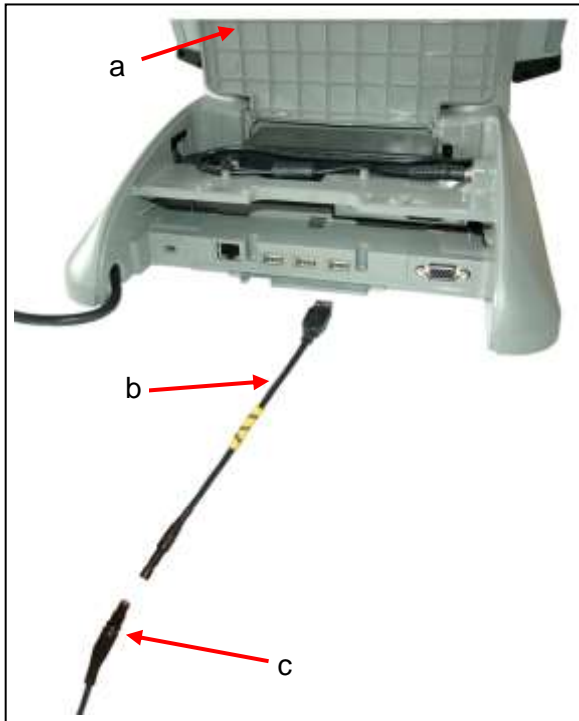


Fig. 5-2 Connecting the VAS 6558A to the VAS 5052A docking station

**Connecting the VAS 6558A to VAS 5052A without docking station:**

2. Please open the Flap of the docking station (a) and connect the „Fischer-to-USB” Adaptor (b) to an unused USB socket. Please make sure that the USB-Connector fits correctly. Connect the VAS6558A (c) to the “Fischer-to-USB”-Connector (b). Please note: The “Fischer-to-USB”-Connector is an accessory from Volkswagen with part no.: ASE 405 258 00 000.

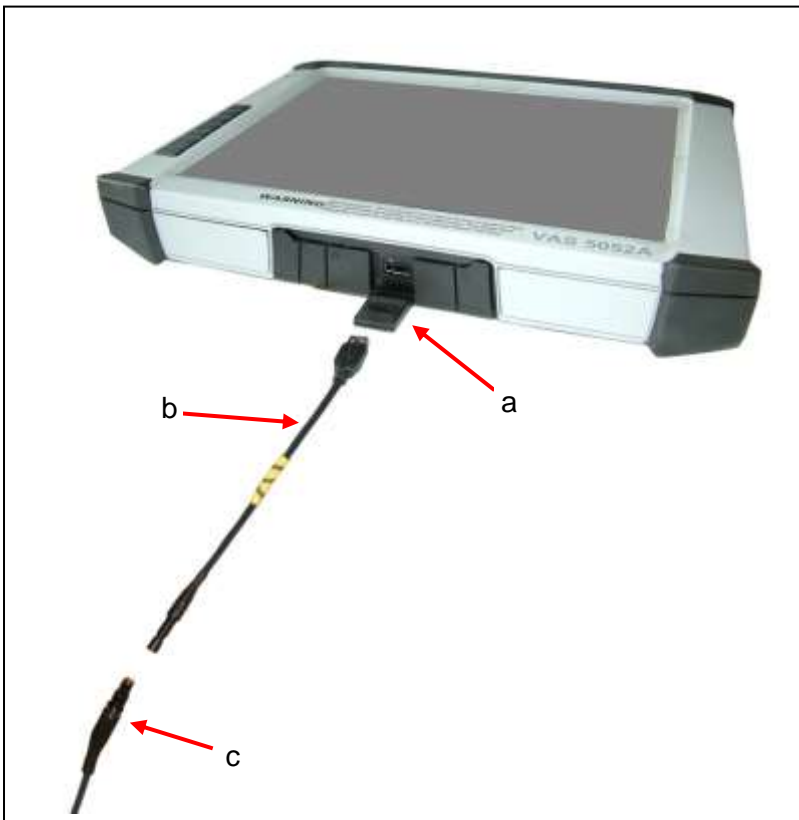


Fig. 5-3 Connecting the VAS 6558A to VAS 5052A

**Connecting the VAS6558A to the VAS5052A without using the docking station (with USB-Angle Plug for pull relief):**

3. Please open the Flap (a) and connect the USB-Adaptor with USB-Angle Plug (b) to an unused USB socket. Please make sure that the USB-Connector fits correctly. Connect the "Fischer-to-USB" Adaptor to the USB Adaptor with Angle Plug. Close the flap to fixate the connection. Connect the VAS6558A (c) to the "Fischer-to-USB"-Connector (b). Please note: The "Fischer-to-USB" Connector is an accessory from Volkswagen with part no.: ASE 405 258 00 000.

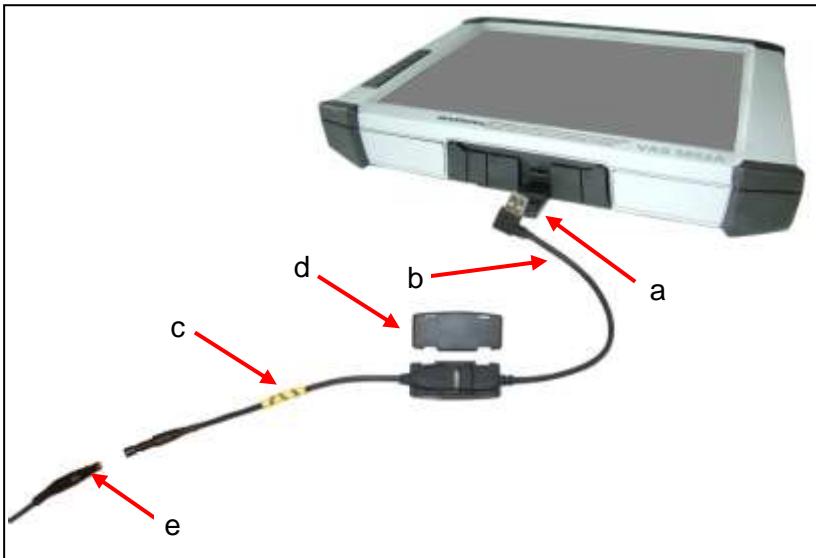


Fig. 5-4 Connecting the VAS 6558A to VAS 5052A

**Connecting the VAS 6558A to VAS 5051B:**

4. Please open the Flap of the docking station (a) and connect the „Fischer-to-USB” Adaptor (b) to an unused USB socket. Please make sure that the USB-Connector fits correctly. Connect the VAS6558A (c) to the “Fischer-to-USB” Connector (b). Please note: The “Fischer-to-USB” Connector is an accessory from Volkswagen with part no.: ASE 405 258 00 000.

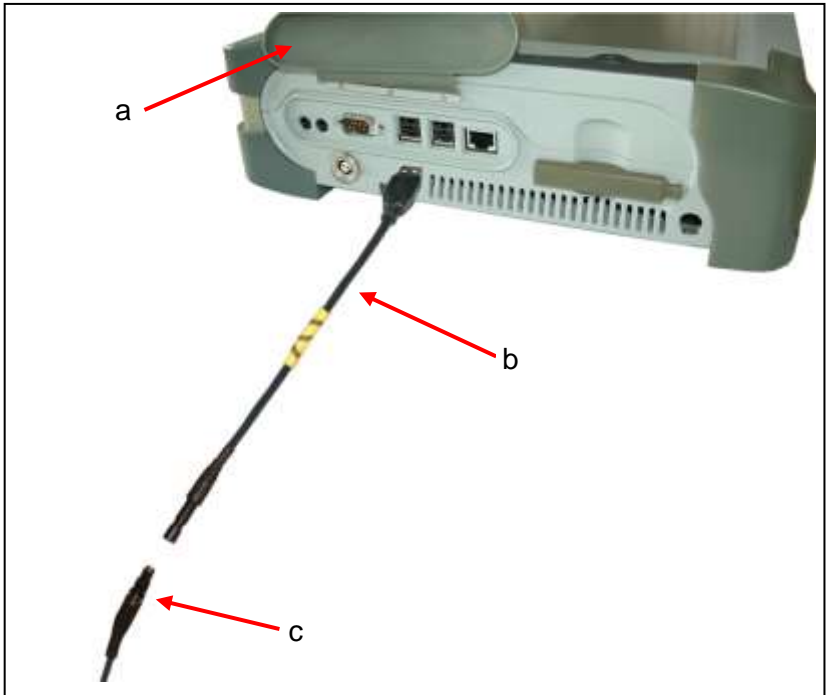


Fig. 5-5 Connecting the VAS 6558A to VAS 5051B

**Connecting the VAS 6558A to VAS 6150A (specified laptop):**

5. Please open the Flap of the docking station (a) and connect the „Fischer-to-USB” Adaptor (b) to an unused USB socket VAS 6150 (A). Please make sure that the USB-Connector fits correctly. Connect the VAS6558A (c) to the “Fischer-to-USB” Connector (b). Please note: The “Fischer-to-USB” Connector is an accessory from Volkswagen with part no.: ASE 405 258 00 000.

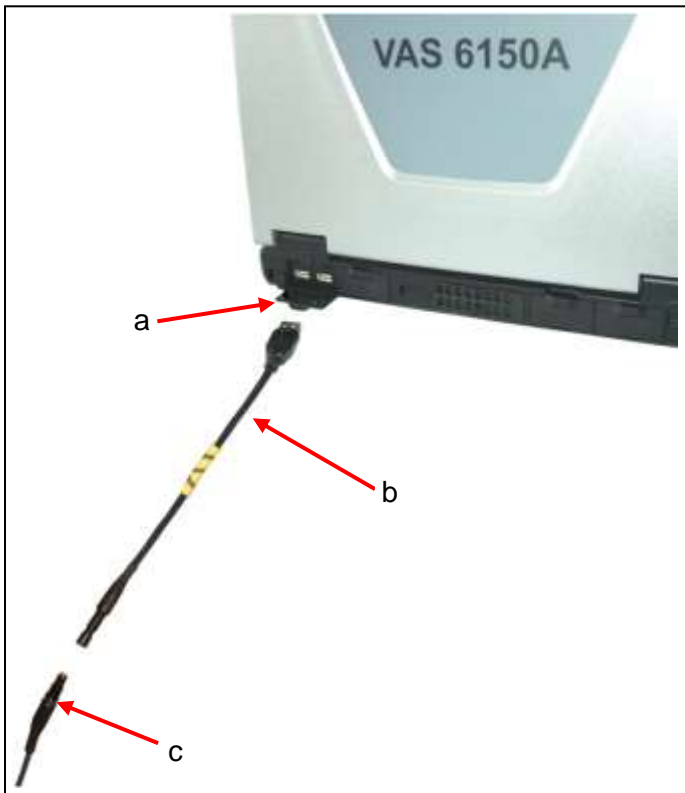


Fig. 5-6 Connecting the VAS 6558A to VAS 6150A (specified laptop)

**Connecting the VAS 6558A to VAS 6150B / VAS 6160 (specified laptop):**

6. Connect the „Fischer“ connector of the VAS6558A (a) to the „Fischer“-socket of the VAS6150B (b). Please make sure that the connector fits correctly.

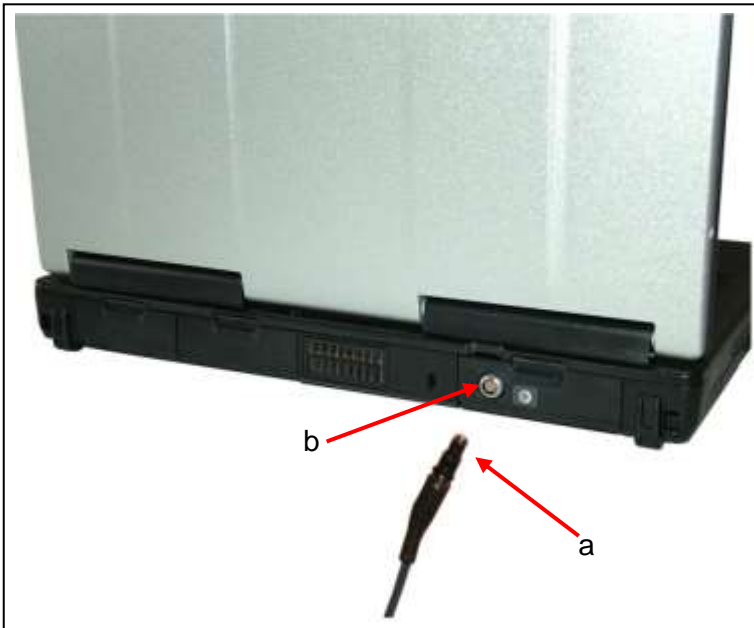


Fig. 5-7 Connecting the VAS 6558A to VAS 6150B / VAS 6160 (specified laptop)

## 6 Power supply



### CAUTION

Temperature compensation

If the VAS 6558A is delivered during winter, prevent condensation inside the unit. For this reason, we advise that the device be left disconnected from the power supply at the place of operation for about 3 hours to allow for temperature compensation.

---

The VAS 6558A is supplied with current via the USB interface.

For instructions on connecting the VAS 6558A to the USB interface, see chapter. 5.2



### CAUTION

Before using the VAS 6558A, read through the operating manuals. They contain additional information concerning startup and operation.

---

### 6.1 Switching off

Disconnect the power supply of the VAS 6558A by unplugging the VAS 6558A USB cable from VAS 5051B, VAS 5052A or VAS 6150(A/B) / VAS 6160 (specified laptop).



## 7 Brief instructions

### 7.1 Installation of VAS 6558A

Install the VAS 6558A software before you connect the VAS 6558A to the tester/specified laptop!

1. Run “**Setup.exe**” from the CD/DVD provided and click on “**Install**”.
2. The VAS 6558A software is installed.
3. Click “**Finish**”.

### 7.2 Adaptation of the cable

1. Hang the VAS 6558A on the cable hooks (a) and run the USB cable in front of the backplate (b) in the equipment trolley.

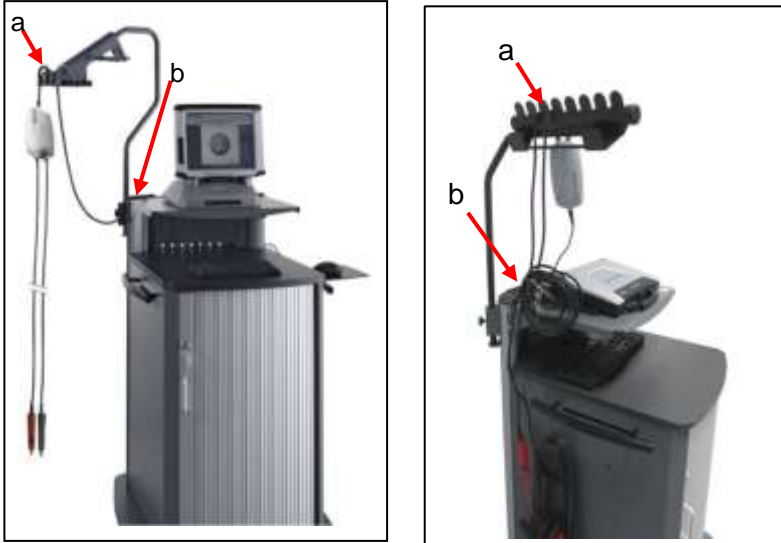


Fig. 7-1 VAS 6558A on the cable hooks

2. Connect the „Fischer“ connector of the VAS6558A (a) to the „Fischer“-socket of the VAS6150B / VAS 6160 (b). Please make sure that the connector fits correctly.

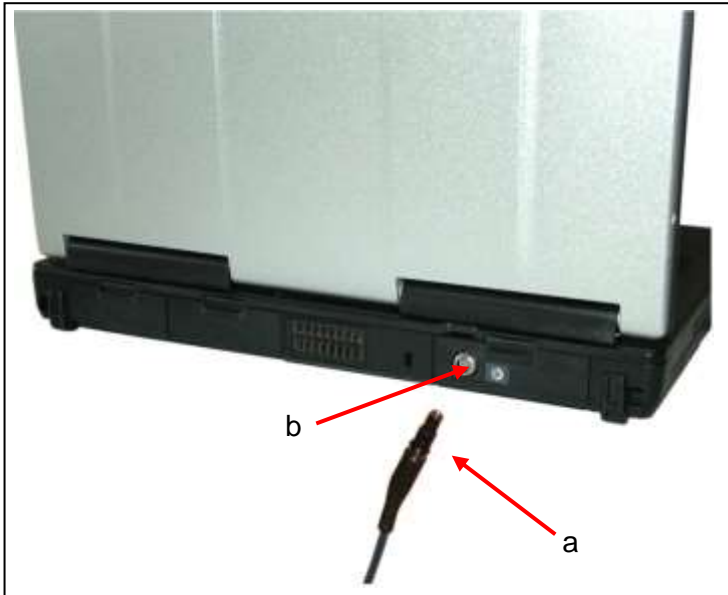


Fig. 7-2 Connecting the VAS 5052A at VAS 6150B / VAS 6160

## 7.3 Starting the VASPC software

See /3/, software operating manual.

## 7.4 Starting the ODIS Service application

Double click  .  
DiagStarter....

## 8 Faults

The VAS 6558A was inspected before it left the factory. Carefully chosen components and adherence to numerous quality controls guarantee high reliability for the VAS 6558A. However, if a fault occurs then please proceed as follows:

- Try to determine what the fault is and to localize it as exactly as possible. Consult the instructions in the Troubleshooting chapter in the Hardware operating manual before contacting the appropriate customer service.
- Fill out the fault report fax in detail, adding any other relevant details, and send it to the faults hotline.

You receive a fault report fax as follows:

- Copy the attached form from the VAS 6558A service information and use it.
- Displaying and printing with Display Documents (see Section 4.3).

### 8.1 Regional service centers

See /4/, service information, chapter 3.1 "*Regional service centers*".

<b>VAS 6558A System Delivery – Proof of Delivery</b> <b>For complaints, please send a fax to:</b> <b>AVL DiTEST ++49 (0) 9103 - 7131 - 112</b>								
<b>Note:</b> <ul style="list-style-type: none"> <li>Please fill out all white fields</li> <li>The delivery has been subdivided into A – System delivery, B – deliverable accessories</li> </ul>								
Name of company: _____ Department: _____ Contact person: _____ Building, floor: _____ Street: _____ Postal or zip code/city: _____ Country: _____			Series number _____  Telephone no. (incl. country code) _____ Fax: _____					
Delivery receipt no.: _____ Date: _____								
Transport damage with damaged outer packaging?  Yes <input type="checkbox"/> No <input type="checkbox"/>								
Article no./ packing notes		Name of article		Nominal qty.	Delivered?		Damaged?	
					Yes	No	Yes	No
<b>A</b>	ASE 405 350 01 000	VAS 6558A high-voltage measuring module (complete) comprising:						
	ASE 405 355 01 000	VAS 6558A high-voltage measuring module basic device		1				
	ASE 405 356 01 000	Storage case		1				
	ASE 405 357 00 000	Red probe tip**		1				
	ASE 405 358 00 000	Black probe tip**		1				

\*) Used for VW Jetta Hybrid!

ASE 405 359 01 000	Multilingual CD/DVD: a) Software: <ul style="list-style-type: none"> <li>• VAS6558A software (driver)</li> </ul> b) Documents: <ul style="list-style-type: none"> <li>• Hardware operating manual</li> <li>• Service information</li> <li>• Registration certificate</li> <li>• Unpacking, startup and brief instructions</li> </ul>	1				
ASE 405 360 01 000	Unpacking, startup and brief instructions (hard copy) Registration certificate (hard copy)	1				
ASE 405 391 00 000	Red probe tip***	1				
ASE 405 392 00 000	Black probe tip***	1				
ASE --- --- -- ---	0 ohm clip	1				

<b>B</b>	ASE 405 257 00 000	USB adapter with cable relief (Accessory)	2				
	ASE 405 351 00 000	The hybrid measuring adapter set contains*:	1				
	ASE 405 352 00 000	Hybrid measurement adapter for voltage measurement*	1				
	ASE 405 353 00 000	Hybrid measurement adapter for leakage resistance measurement*	1				
	ASE 405 354 00 000	Hybrid measurement adapter for air conditioning compressor *	1				
	ASE 405 362 00 000	Set HV-Testadaptor** containing the 4 parts below:	1				
	ASE 405 363 00 000	Hybrid-Testadaptor single IPT**	1				
	ASE 405 364 00 000	Hybrid-Testadaptor 2-pole IPT**	1				
	ASE 405 365 00 000	Hybrid-Testadaptor 3-pole IPT**	1				
	ASE 405 366 00 000	Hybridadapter for climate compressor**	1				
	ASE 405 394 00 000	Set of Kelvin terminals / measuring tips (red & black) for precise equipotential bonding without zero adjustment via 4-wire measuring method	1				
	ASE 405 371 00 000	Kelvin clamp red and black	1				
	ASE 405 372 00 000	Kelvin measuring tip red and black	1				
	ASE --- --- -- ---	0 ohm clip	1				
	ASE 405 391 00 000	Red probe tip***	1				
ASE 405 392 00 000	Black probe tip***	1					

Please mark with a cross

\*) Only for use with VW Tuareg, Audi Q5, Porsche Cayenne und Porsche Panamera!

\*\*\*) Used for VW Jetta Hybrid!

\*\*\*) Used for VW Touareg Hybrid, Audi Q7 Hybrid!

